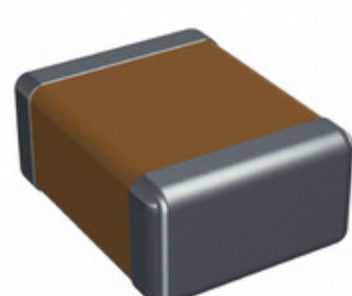


## 12105U6R8CAT2A



**Part Number:** [12105U6R8CAT2A](#)  
**Manufacturer:** [AVX Corporation](#)  
**Description:** CAP CER 6.8PF 50V NP0 1210  
**Data sheet:** [Ceramic Chip Capacitor Catalog](#)  
[U Series, Ultra Low](#)

**RoHS Status:** Lead free / RoHS Compliant  
**Ship From:** Hong Kong  
**Shipment Way:** DHL/Fedex/TNT/UPS/EMS

Images are for reference only.  
 See Product Specifications for product details.  
 Buy 12105U6R8CAT2A with confidence from  
 Component-World.HK, 1 Year Warranty

[Request For Quotation](#)

### PRODUCT PARAMETER

<b>Part Number</b>	12105U6R8CAT2A	<b>Manufacturer</b>	<a href="#">AVX Corporation</a>
<b>Description</b>	CAP CER 6.8PF 50V NP0 1210	<b>Lead Free Status / RoHS Status</b>	Lead free / RoHS Compliant
<b>Quantity Available</b>	235979 pcs	<b>Data sheet</b>	<a href="#">Ceramic Chip Capacitor Catalog</a> <a href="#">U Series, Ultra Low</a>
<b>Category</b>	<a href="#">Capacitors</a>	<b>Voltage - Rated</b>	50V
<b>Tolerance</b>	±0.25pF	<b>Thickness (Max)</b>	0.055" (1.40mm)
<b>Temperature Coefficient</b>	C0G, NP0	<b>Size / Dimension</b>	0.126" L x 0.098" W (3.20mm x 2.49mm)
<b>Series</b>	U	<b>Ratings</b>	-
<b>Packaging</b>	Tape & Reel (TR)	<b>Package / Case</b>	1210 (3225 Metric)
<b>Operating Temperature</b>	-55°C ~ 125°C	<b>Mounting Type</b>	Surface Mount, MLCC
<b>Moisture Sensitivity Level (MSL)</b>	1 (Unlimited)	<b>Manufacturer Standard Lead Time</b>	16 Weeks
<b>Lead Style</b>	-	<b>Lead Spacing</b>	-
<b>Lead Free Status / RoHS Status</b>	Lead free / RoHS Compliant	<b>Height - Seated (Max)</b>	-
<b>Features</b>	Ultra Low ESR	<b>Detailed Description</b>	6.8pF ±0.25pF 50V Ceramic Capacitor C0G, NP0 1210 (3225 Metric)
<b>Capacitance</b>	6.8pF	<b>Applications</b>	RF, Microwave, High Frequency

Component-World.com is a Reliable Stocking Distributor of Electronic Components. We specialize in all AVX Corporation series electronic components. We have 235979 pieces of AVX Corporation 12105U6R8CAT2A in stock available now. Request a quote from electronics components distributor at Component-World.com, our sales team will contact you within 24 hours.  
 RFQ Email: [info@Components-World.com](mailto:info@Components-World.com)

### RELATED PRODUCTS

	<b>Part#:</b> <a href="#">12105U821JAT2A</a> <b>Description:</b> CAP CER 820PF 50V C0G/NP0 1210	<b>Manufacturers:</b> <a href="#">AVX Corporation</a>	<a href="#">RFQ</a>
	<b>Part#:</b> <a href="#">12105U511FAT2A</a> <b>Description:</b> CAP CER 510PF 50V NP0 1210	<b>Manufacturers:</b> <a href="#">AVX Corporation</a>	<a href="#">RFQ</a>
	<b>Part#:</b> <a href="#">12105U471KAT2A</a> <b>Description:</b> CAP CER 470PF 50V NP0 1210	<b>Manufacturers:</b> <a href="#">AVX Corporation</a>	<a href="#">RFQ</a>
	<b>Part#:</b> <a href="#">12105U680GAT2A</a> <b>Description:</b> CAP CER 68PF 50V NP0 1210	<b>Manufacturers:</b> <a href="#">AVX Corporation</a>	<a href="#">RFQ</a>
	<b>Part#:</b> <a href="#">1210640120</a> <b>Description:</b> CONNECTOR 022 PG09 TRASP.H12	<b>Manufacturers:</b> <a href="#">Affinity Medical Technologies - a Molex company</a>	<a href="#">RFQ</a>
	<b>Part#:</b> <a href="#">12105U5R6BAT2A</a> <b>Description:</b> CAP CER 5.6PF 50V NP0 1210	<b>Manufacturers:</b> <a href="#">AVX Corporation</a>	<a href="#">RFQ</a>
	<b>Part#:</b> <a href="#">1210640579</a> <b>Description:</b> CONN 182 PG09 TRASP H12	<b>Manufacturers:</b> <a href="#">Affinity Medical Technologies - a Molex company</a>	<a href="#">RFQ</a>
	<b>Part#:</b> <a href="#">12105U6R8BAT2A</a> <b>Description:</b> CAP CER 6.8PF 50V NP0 1210	<b>Manufacturers:</b> <a href="#">AVX Corporation</a>	<a href="#">RFQ</a>
	<b>Part#:</b> <a href="#">12105U9R1CAT2A</a> <b>Description:</b> CAP CER 9.1PF 50V NP0 1210	<b>Manufacturers:</b> <a href="#">AVX Corporation</a>	<a href="#">RFQ</a>
	<b>Part#:</b> <a href="#">12105U5R1CAT2A</a> <b>Description:</b> CAP CER 5.1PF 50V NP0 1210	<b>Manufacturers:</b> <a href="#">AVX Corporation</a>	<a href="#">RFQ</a>
	<b>Part#:</b> <a href="#">12105U561FAT9A</a> <b>Description:</b> CAP CER 560PF 50V C0G/NP0 1210	<b>Manufacturers:</b> <a href="#">AVX Corporation</a>	<a href="#">RFQ</a>
	<b>Part#:</b> <a href="#">12105U6R2CAT2A</a> <b>Description:</b> CAP CER 6.2PF 50V NP0 1210	<b>Manufacturers:</b> <a href="#">AVX Corporation</a>	<a href="#">RFQ</a>
	<b>Part#:</b> <a href="#">1210640545</a> <b>Description:</b> S182 PG 09 TRAN LED BIPOLAR 24V	<b>Manufacturers:</b> <a href="#">Affinity Medical Technologies - a Molex company</a>	<a href="#">RFQ</a>
	<b>Part#:</b> <a href="#">12105U561FAT2A</a> <b>Description:</b> CAP CER 560PF 50V C0G/NP0 1210	<b>Manufacturers:</b> <a href="#">AVX Corporation</a>	<a href="#">RFQ</a>
	<b>Part#:</b> <a href="#">12105U471JAT2A</a> <b>Description:</b> CAP CER 470PF 50V NP0 1210	<b>Manufacturers:</b> <a href="#">AVX Corporation</a>	<a href="#">RFQ</a>
	<b>Part#:</b> <a href="#">12105U750JAT9A</a> <b>Description:</b> CAP CER 75PF 50V C0G/NP0 1210	<b>Manufacturers:</b> <a href="#">AVX Corporation</a>	<a href="#">RFQ</a>
	<b>Part#:</b> <a href="#">12105U8R2BAT2A</a> <b>Description:</b> CAP CER 8.2PF 50V NP0 1210	<b>Manufacturers:</b> <a href="#">AVX Corporation</a>	<a href="#">RFQ</a>
	<b>Part#:</b> <a href="#">12105U821JAT9A</a> <b>Description:</b> CAP CER 820PF 50V C0G/NP0 1210	<b>Manufacturers:</b> <a href="#">AVX Corporation</a>	<a href="#">RFQ</a>
	<b>Part#:</b> <a href="#">12105U9R1DAT2A</a> <b>Description:</b> CAP CER 9.1PF 50V NP0 1210	<b>Manufacturers:</b> <a href="#">AVX Corporation</a>	<a href="#">RFQ</a>
	<b>Part#:</b> <a href="#">12105U750JAT2A</a> <b>Description:</b> CAP CER 75PF 50V C0G/NP0 1210	<b>Manufacturers:</b> <a href="#">AVX Corporation</a>	<a href="#">RFQ</a>

### Related keywords for 12105U6R8CAT2A

<a href="#">AVX Corporation 12105U6R8CAT2A</a>	<a href="#">12105U6R8CAT2A distributor</a>	<a href="#">12105U6R8CAT2A supplier</a>	<a href="#">12105U6R8CAT2A price</a>
<a href="#">12105U6R8CAT2A download datasheet</a>	<a href="#">12105U6R8CAT2A datasheet</a>	<a href="#">12105U6R8CAT2A stock</a>	<a href="#">buy 12105U6R8CAT2A</a>
<a href="#">AVX Corporation 12105U6R8CAT2A</a>	<a href="#">AVX Corporation [MIL] 12105U6R8CAT2A</a>		